



aluminium door panels

A fresh approach to the provision
of aluminium door panels.

VIVALDA
bringing construction to life[®]

Introduction

Vivalda ensures the use of premium materials and fabrication methods to bring unrivalled standards to the door panel market. We manufacture a wide range of aluminium door panels in a choice of 1000's of RAL colours and a comprehensive range of glass options to suit any taste.

With years of experience in manufacturing composite panels, we take pride in being leaders in the industry. This is reflected in the quality of the components we use to create premium door panels.

We use 1.5mm aluminium and 4.5mm cement board reinforcing as standard. The enclosed edges on all sides of the panels increase security, stability and ensures long lasting aesthetic appeal.

We pride ourselves on service, reliability and innovation. Our dedicated team collaborate with window and door manufacturers from design to completion to create a premium product for your clients to be proud of.

aluminium door panels

A fresh approach to the provision of aluminium door panels.

Panel Construction

Polyester Powder Coating (PPC)

Thanks to its long-standing association with suppliers such as Akzo Nobel, Axalta and Sherwin-Williams. Vivalda offer any colour from these ranges.

1.5mm Aluminium

Vivalda use 1.5mm thick aluminium as standard. The enclosed edges increase stability and prevent defects from occurring in the manufacturing process.

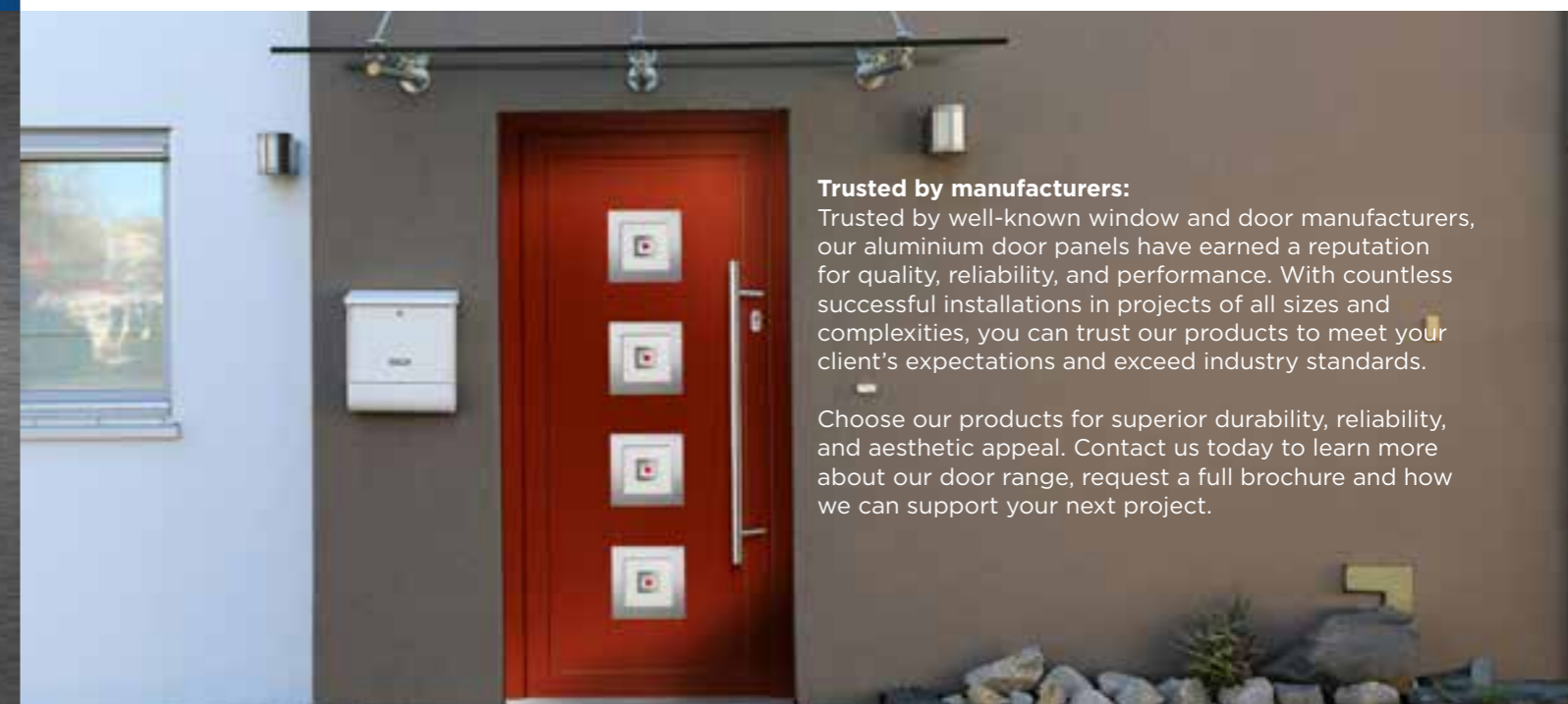
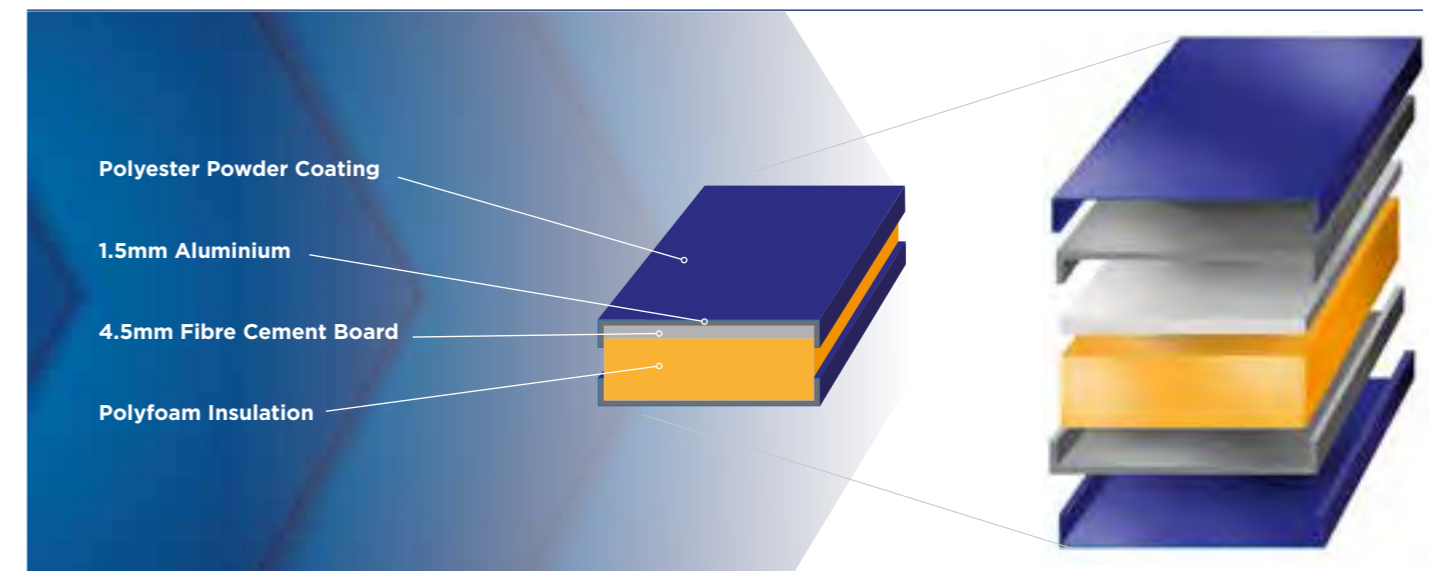
The enclosed edges on all sides of the panels makes installation easy ensuring a solid base assisting with toeing and heeling. This design increases security, stability and ensures long lasting aesthetic appeal.

4.5mm Fibre Cement Board

The door panels benefit from using 4.5mm fibre cement boards as they provide a durable, dimensionally stable and impact-resistant material that will withstand extreme climates as well as resist rot and fungus.

Polyfoam (XPS) Insulation

Polyfoam Laminating Board is a rigid extruded polystyrene board that is lightweight, has excellent structural strength and is resistant to moisture absorption.



Trusted by manufacturers:

Trusted by well-known window and door manufacturers, our aluminium door panels have earned a reputation for quality, reliability, and performance. With countless successful installations in projects of all sizes and complexities, you can trust our products to meet your client's expectations and exceed industry standards.

Choose our products for superior durability, reliability, and aesthetic appeal. Contact us today to learn more about our door range, request a full brochure and how we can support your next project.



VIVALDA's commitment to quality inspection and high standards in the production environment means our aluminium door panels create the perfect foundation for fabricators to create robust and visually appealing doors for your clients.

Door images are for illustration purposes only.
All glass options displayed on page 13.

Fabrication

All our aluminium door panels are made in the UK and produced to the highest standards with regular inspections at each stage of the manufacturing process. VIVALDA's commitment to quality inspection and high standards in the production environment means our aluminium door panels create the perfect foundation for fabricators to create robust and visually appealing door systems.

Each door panel has the option to be dual coloured meaning your client can chose a different colour for the rear of the door to suit the interior.

All panels are bespoke made to order. We work to the exact specifications from our customers.

- Craftmanship
- Quality
- Thermal Efficiency



Anti Corrosion: Every aluminium panel is cut, then powder coated before the final stage of manufacturing. This creates a sleek finish, prevents water ingress and protects the aluminium from harsh weather conditions.

Linear Collection

All door panels are available cut to size



Name: Wight
Colour: 7016
Glass: Clear



Name: Lismore
Colour: 6021
Glass: Clear



Name: Islay
Colour: 1023
Glass: Satin



Name: Arran
Colour: 3020
Glass: Satin



Name: Fetlar (V)
Colour: RAL 7035



Name: Fetlar (H)
Colour: RAL 9005



Name: Bryher
Colour: RAL 9910



Name: Orkney
Colour: RAL 5005

Curve Collection

All door panels are available cut to size



Name: Scalpay
Colour: 6021
Glass: Satin



Name: Westray
Colour: 7035
Glass: Satin



Name: Stronsay
Colour: 9910
Glass: Satin



Name: Canvey
Colour: 7016
Glass: Tacoma



Name: Barra
Colour: 5005
Glass: Yukon



Door images are for illustration purposes only.
All glass options displayed on page 13.



Door images are for illustration purposes only.
All glass options displayed on page 13.

Box Collection

All door panels are available cut to size



Name: Coll
Colour: 7035
Glass: Aspen



Name: Hoy
Colour: 5005
Glass: Satin



Name: Jura
Colour: 3020
Glass: Tahoe Red



Name: Rum
Colour: 7016
Glass: Clear



Name: Shetland
Colour: 6021
Glass: Satin



Name: Ulva
Colour: 9910
Glass: Clear

Grand Collection

All door panels are available cut to size



Name: Hayling
Colour: 6021
Glass: Clear



Name: Sanday
Colour: 7016
Glass: Satin



Name: Tresco
Colour: 3020
Glass: Tahoe Red



Name: Lundy
Colour: 1023
Glass: Richmond

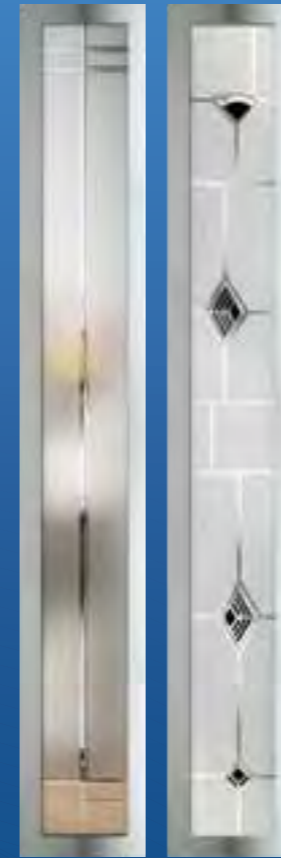
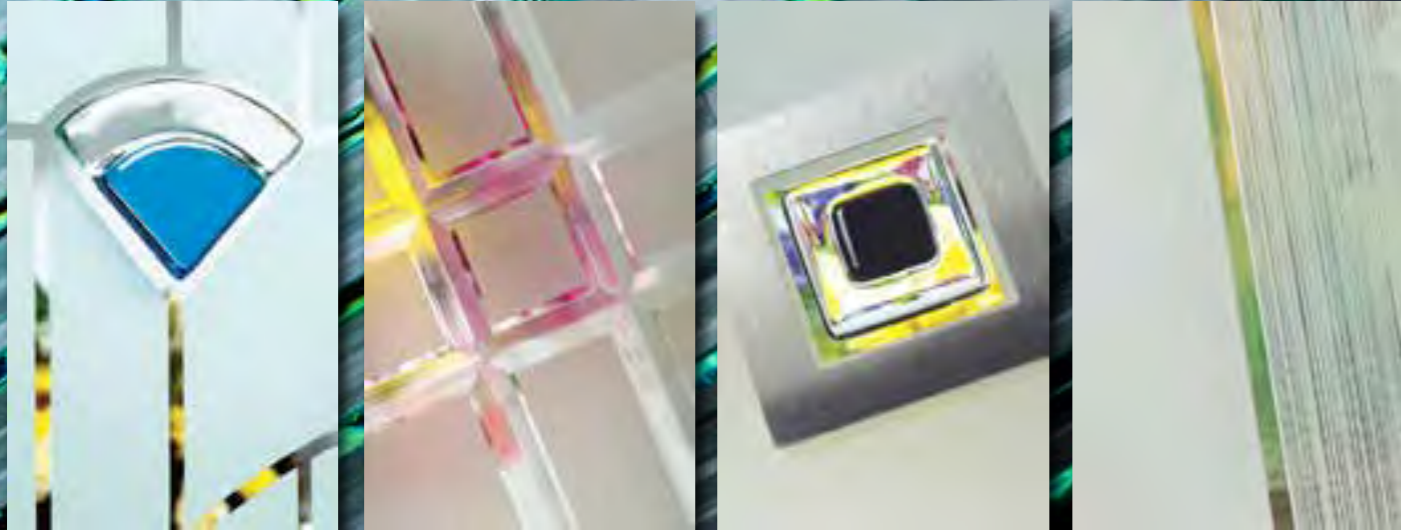
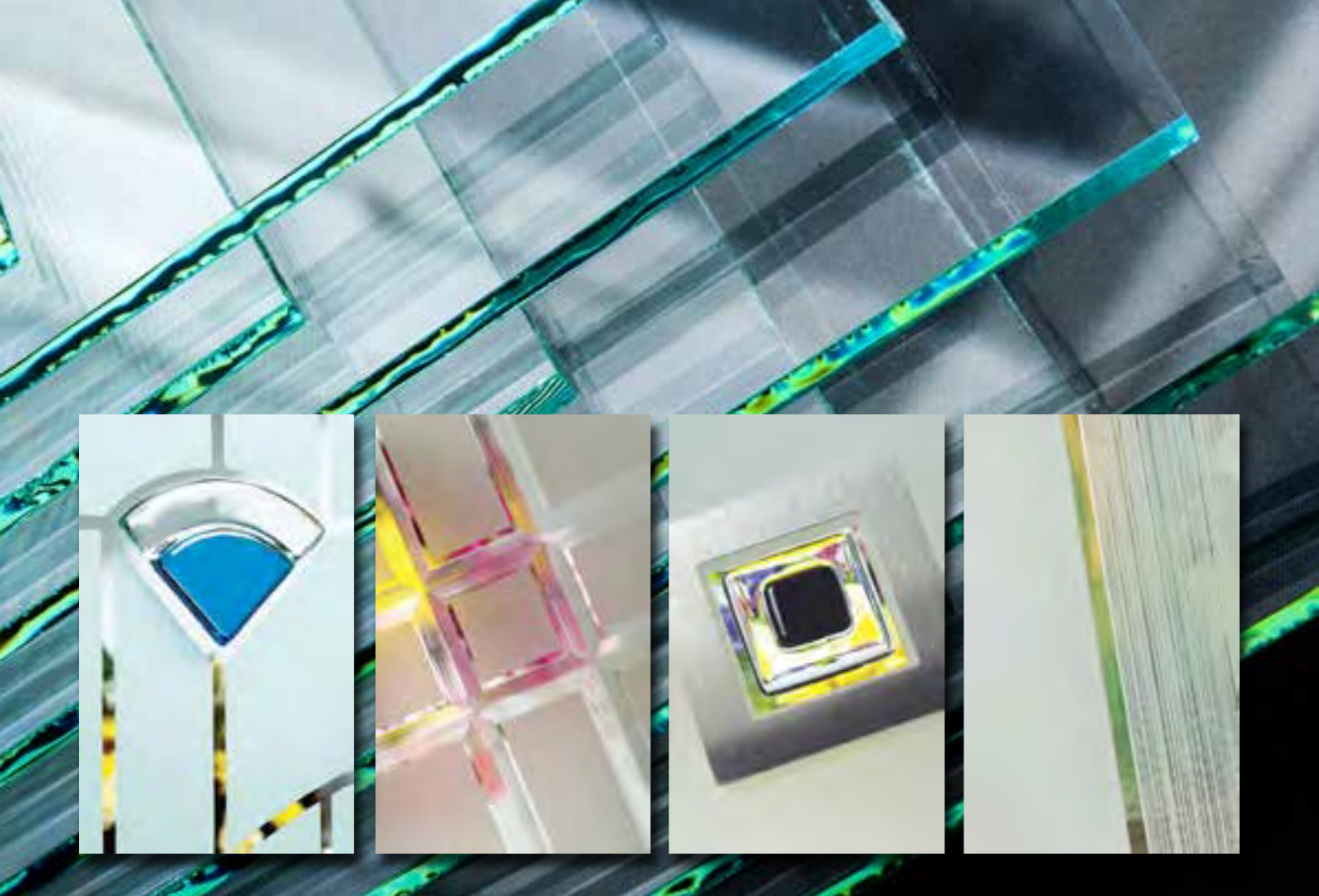


Name: Skye
Colour: 7035
Glass: Clear



Name: Walney
Colour: 5005
Glass: Tahoe Blue





Linear

Murano



Quartz

Yukon

Tacoma

Customisation Options - Glass

All our aluminium door panels are made in the UK.
Stainless steel trims can be added to both sides of the door panel to perfectly frame your customers choice of glass.



Aspen

Clear

Greenwich

Kensington

Montreal



Satin

Richmond

Tahoe

Clelo

Door Name	Stainless Steel Trims Available	Glass Position	Aspen	Clelo	Clear	Greenwich	Kensington	Linear	Montreal	Murano	Quartz	Richmond	Satin	Tacoma	Tahoe	Yukon
Arran	N	LR			•								•			
Barra	Y	LR		•	•								•			
Bryher	N										•					•
Canvey	Y	LR			•		•						•	•		
Coll	Y	C	•		•	•	•		•			•	•		•	
Fetlar (H)	N															
Fetlar (V)	N															
Hayling	Y	C			•								•			
Hoy	Y	LCR	•		•	•	•		•				•		•	
Islay	N	C			•								•			
Jura	Y	LCR	•		•	•	•		•			•	•		•	
Lismore	N	C			•								•			
Lundy	Y	LCR			•			•		•		•	•		•	
Orkney	N															
Rum	Y	LCR	•		•	•	•		•			•	•		•	
Sanday	Y	C			•								•			
Scalpay	Y	LR			•								•			
Shetland	Y	C	•		•	•	•		•			•	•		•	
Skye	Y	C			•								•			
Stronsay	Y	LR			•								•			
Tresco	Y	LCR			•	•	•					•	•		•	
Ulva	Y	C	•		•	•	•		•			•	•		•	
Walney	Y	LR			•		•						•		•	
Westray	Y	C			•								•			
Wight	N	LR			•								•			

Trusted by manufacturers

Durability

All doors are manufactured using 1.5mm thick aluminium sheet and 4.5mm cement board as standard.

Reinforcement

Vivalda uses a fibre cement board in every door construction to provide the all-important added strength and stability.

Robustness

All doors incorporate returned edges, eradicating paint flaking when installing and improving product security.

Reliable

Our dedicated team work with you and your client from design through to completion to ensure impeccable customer service is received from order to final delivery.

Customisation Options - Colour

Choose from 1000's of RAL colours to match existing windows and suit your clients style. We stock a wide range of RAL colours to choose from, contributing to a faster lead time.

Choose from our large stocked range of colours or customise your colour with any RAL code reference. We include custom colours in our quote as standard!

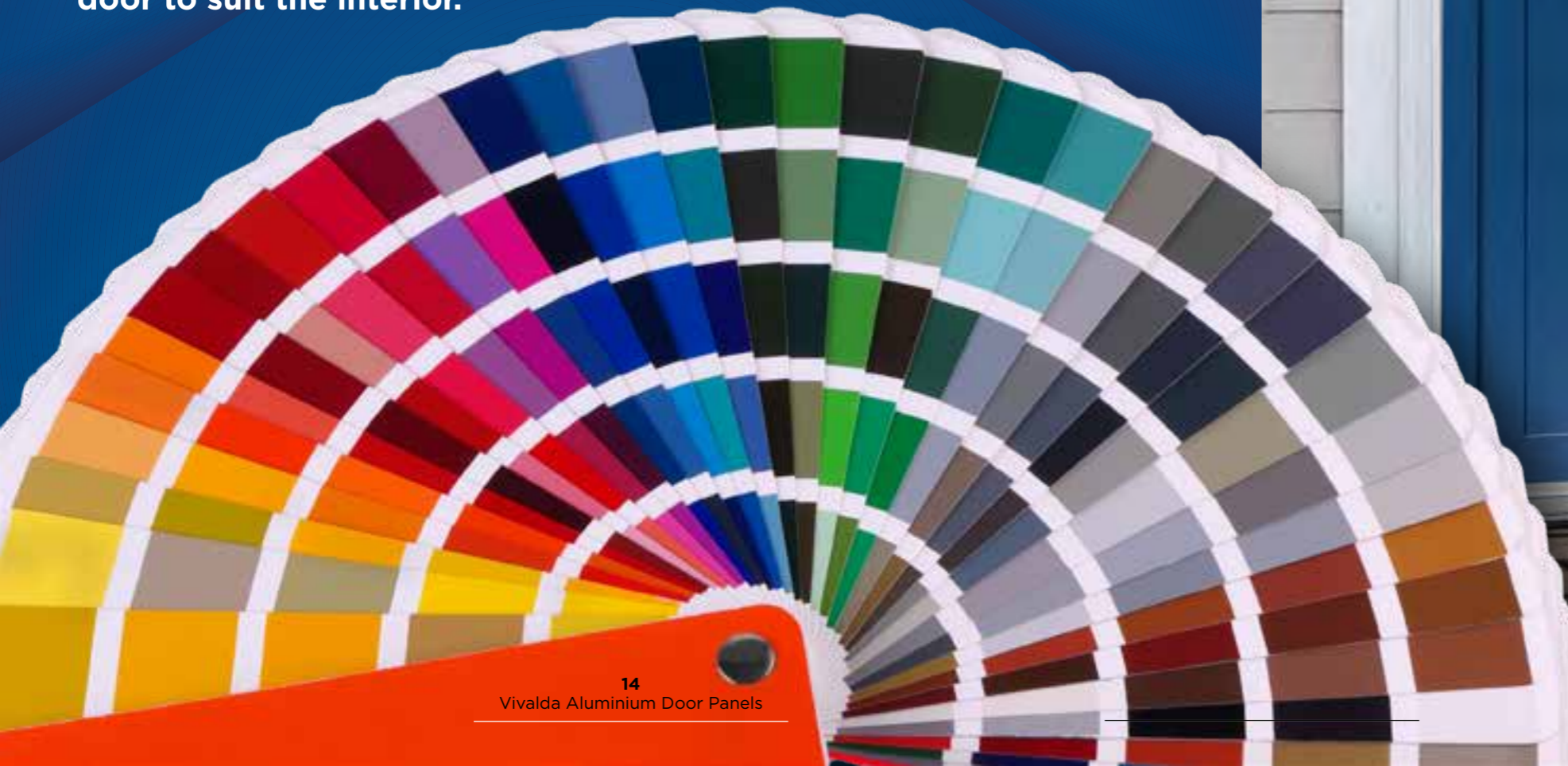
Dual Colours: Each door panel has the option to be dual coloured meaning your client can choose a different colour for the rear of the door to suit the interior.

Total control

We own and manage our supply chain - from design, to fabrication, to delivery - to your door.

Customisation

Our customisation options ensure that your aluminium doors meet your clients exact specifications and design preferences. Choose from a wide variety of colours, finishes and glass designs to create doors that reflect your unique style.



Composite Range

Since 1999, VIVALDA have been producing high quality, durable composite panels for the construction and glazing industries. Our specialist production centres have the capability to manufacture bespoke composite panels to suit an extensive range of specifications.

Composite panels are used in glazing system or curtain walling to provide thermal insulation properties as well as a finished decorative face in one application.

We pride ourselves on being the specialist composite panel provider, distributing across the UK and Ireland. With over 60 years of experience within the sector, we have extensive expertise in working with a variety of products to meet specific project requirements.

Our technical support team can offer assistance with selecting the correct products to meet the desired specification and additionally provide assistance on site if required.

Our range of equipment and machinery allows our expert production team to manufacture bespoke composite panels to any specification. This includes fabricating welded and dressed trays to achieve specific U-value thermal requirements.

Composite panels are used in glazing systems or curtain walling to provide thermal insulation properties as well as a finished decorative face in one application.

Our vast offering of products include:

- Square edge Infill panels
- Top hat panels
- Corner panels
- Fascias and soffits
- Window cills
- Flashings and trims
- Column casing / post covers

FORTIS A2

composite panels

Fire-rated Aluminium Infill Panels

VIVALDA manufacture fire-rated composite panels to suit all glazing systems. Each panel is constructed with a fire safe non-combustible core of Mineral Fibre Lamella optimising performance and helping to prevent the spread of fire within a building.

Efficiency in their installation, combined with high fire safety standards and design flexibility, is essential for ensuring both structural integrity and aesthetic appeal.

Panels often sit in non-vision curtain walling areas to help conceal the structure that lies between floors in buildings adding interest and continuity to the building façade. Our infill panels can be colour-matched to 1000s of RAL colours to suit the surrounding façade or glazing system.

Work with us on your next project...
speak to our Composites Team:
composites@vivalda.co.uk



Benefits:

- Available in RAL, B.S and Syntha Pulvin colours
- Manufactured to individual specification
- Low maintenance
- Designed to suit your glazing system
- Meets U Value requirements

Technical:

- A2 Fire Rated
- Overall panel thickness: 28mm - 150mm
- 1.5mm polyester powder-coated aluminium
- Lamella core

Our panels are tested to british standard BS EN13501-1:2018 and achieve A2-s1,d0.



FORTIS A2

composite panels

VIVALDA Group Services

At VIVALDA we pride ourselves on being the specialist composite panel providers, serving customers across the UK and Ireland.

We take on any size job and treat all projects with the same level of efficiency, professionalism and expert touch.

Our dedicated sales team offer competitive quotations and technical advice. Boasting over 60 years of experience within the sector, our teams have extensive expertise in working with a diverse product range.

Our extensive machinery and equipment includes:

- CNC routers
- Computer operated beam saws
- Guillotines
- Hydraulic presses
- Vacuum presses
- Pressbrakes
- Welding equipment
- Powder coating plant

Our range of equipment and machinery allows our expert production teams to create bespoke composite panels to exacting size and shape requirements. This includes fabricating stepped trays in order for panels to be glazed into the system, rebated panels that help to achieve specific U-value thermal requirements, and corner panels that can be shaped to varying angles.

With a vast network of branches, VIVALDA have excellent transport links; allowing our composite panel service to reach all our customers anywhere in the UK and Ireland. As part of our transport services, we offer palletised delivery to allow for ease of off-loading, professional pallet labelling (to customer requirements), plus protective wrapping of the products so they arrive in the same condition that they left our warehouse.

Production

All our panels are factory produced to the highest standards with regular inspections at each stage of the manufacturing process. VIVALDA's commitment to quality inspection and high standards in the production environment means our composite panels leave our site in excellent condition, ready for installation.

Warranty

For your reassurance, VIVALDA offers a 10 year warranty on the bonding process, to cover against delamination. For each component element of the composite panel, depending on the material used, the component manufacturer warranty will apply. Please speak to your VIVALDA representative when enquiring.

All information featured in this brochure is accurate at time of print. For confirmation of warranties, panel dimensions, finishes and available product ranges, please reconfirm with VIVALDA at the time of enquiry.



aluminium door panels

A fresh approach to the provision of aluminium door panels.

VIVALDA
bringing construction to life®

✉ composites@vivalda.co.uk ☎ 01482 310865 🌐 vivalda.co.uk

aluminium door panels

A fresh approach to the provision
of aluminium door panels.

VIVALDA
bringing construction to life[®]

✉ composites@vivalda.co.uk ☎ 01482 310865 🌐 vivalda.co.uk